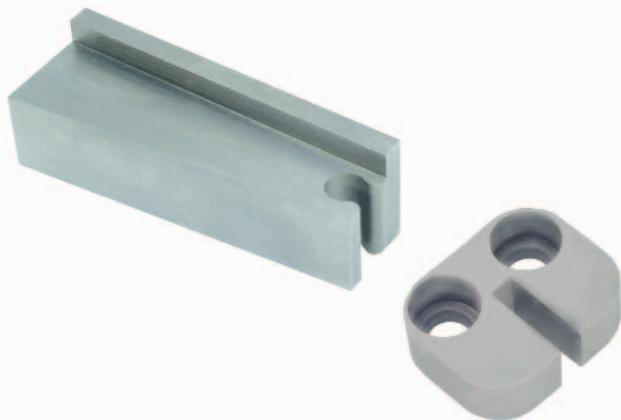


E-Z Lifter™ Compact Series

Patent No. 5,281,127



Advantages

- Smooth pivoting motion inhibits galling and reduces wear
- Design eliminates blow back problems
- Heel plates stabilize actuator and act as a positive stop
- Pre-hardened Lifter Blanks, no heat treat necessary
- No moving parts in ejector plate (no wear plate assemblies or sliding shoes)
- Simple stationary retainer installed between the ejector plates saves time and machining costs
- All E-Z Lifter™ components in stock
- Patent No. 5,281,127

Lifter Blanks

- Hardened S-7, 54 - 56 Rc
- SPECIAL SIZES & MATERIALS AVAILABLE UPON REQUEST

| CATALOG NUMBER | T | W | L | C | COMPATIBLE ACTUATOR |
|----------------|------|------|-------|------|---------------------|
| TL1* | .325 | .425 | 1.375 | .145 | AM20 |
| TL2* | .483 | .583 | 1.375 | .177 | AM20 |

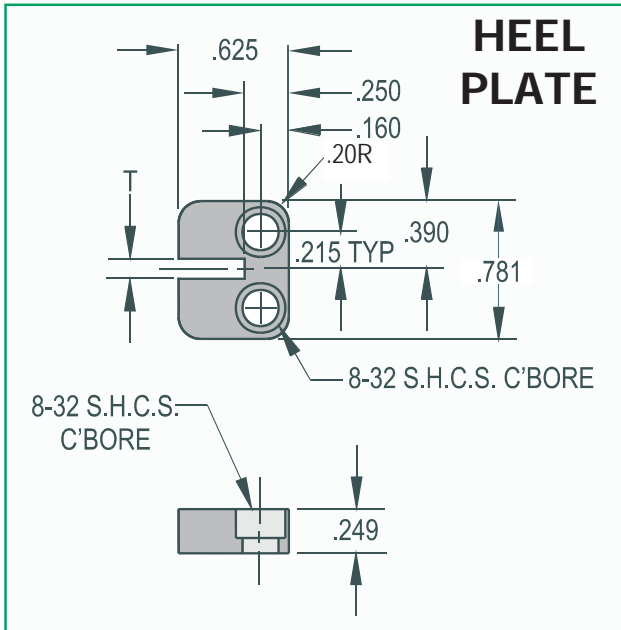
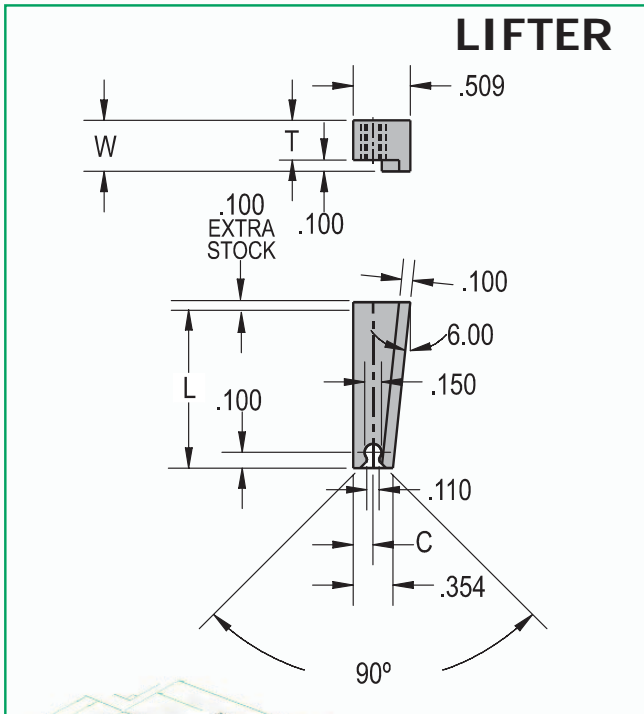
*For mirrored lifter blanks, please add "-L" to part # when ordering. (i.e. TL1-L)

Engineering information available upon request

Heel Plates

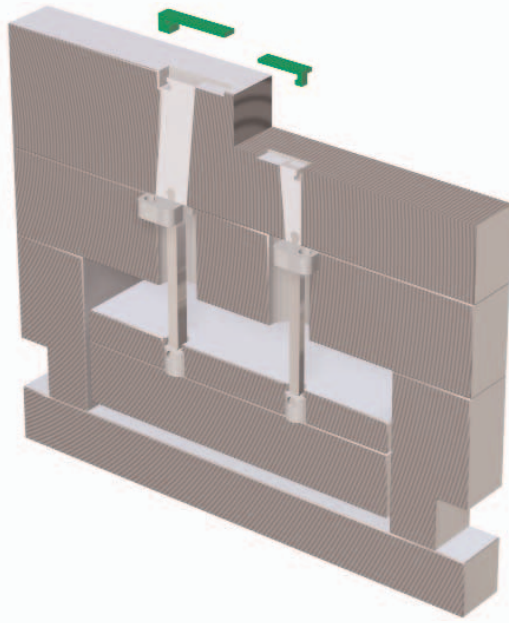
- Drilled & counterbored for securing in recessed pocket

| CATALOG NUMBER | T |
|----------------|------|
| MHP-100 | .103 |
| MHP-200 | .203 |



E-Z Lifter™ Compact Series

Patent No. 5,281,127

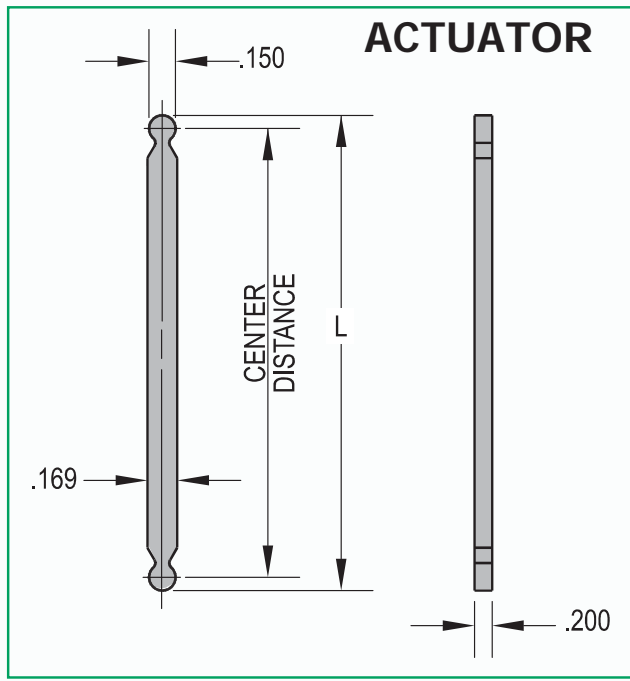
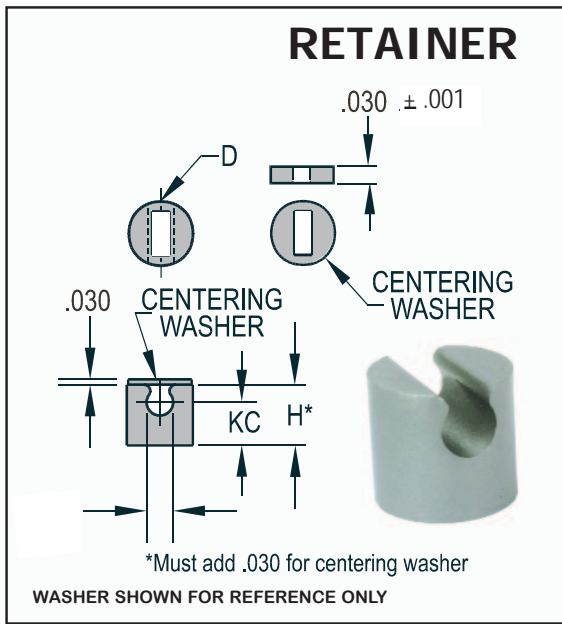


Actuators

| CATALOG NUMBER | CENTER DISTANCE | L |
|----------------|-----------------|-------|
| AM20-269 | 2.542 | 2.692 |
| AM20-319 | 3.042 | 3.192 |
| AM20-369 | 3.542 | 3.692 |
| AM20-419 | 4.042 | 4.192 |
| AM20-469 | 4.542 | 4.692 |
| AM20-519 | 5.042 | 5.192 |

Retainer

| CATALOG NUMBER | H | KC | D -.0005 -.0008 |
|----------------|------|------|-----------------------|
| HR375RM | .345 | .245 | .375 |



Centering Washer

| CATALOG NUMBER | SLOT SIZE |
|----------------|-------------|
| AM10 WASHER | .103 x .220 |
| AM20 WASHER | .203 x .220 |

*INCLUDED FREE WITH ACTUATOR + RETAINER CAN ALSO BE PURCHASED SEPARATELY



Home of the Hardened Throughout™ Pin

